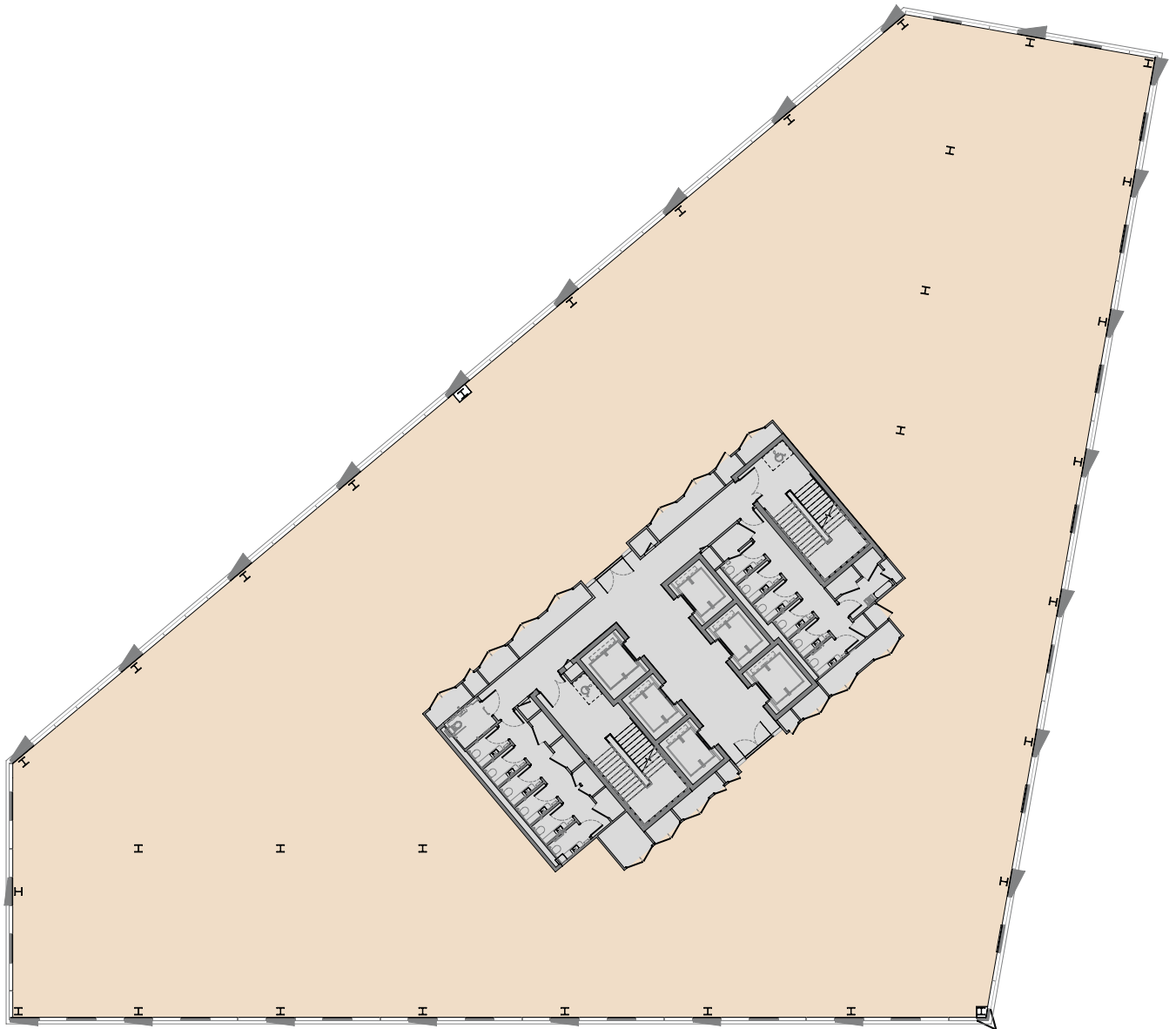


## Second

18,640 sq ft (1732 sq m)



**Misrepresentation Act** Savills and Jones Lang LaSalle and for themselves and for the vendor/lessor as agents for the vendor/lessor give notice that: 1. The information in these particulars is intended as a general outline only for the guidance of intending purchasers/lessees and neither Savills, Jones Lang LaSalle nor the vendor/lessor on whose behalf these particulars are provided accept any responsibility for any inaccuracies the particulars may contain. Any intending purchaser/lessee should not rely upon them as statements or representations of fact but should satisfy themselves by inspection or otherwise as to their correctness. All floor areas and other measurements are approximate.

2. These particulars do not form, or form any part of, any offer or contract. 3. Neither Savills, Jones Lang LaSalle nor any of their employees has any authority, either orally or in writing, to make or give any representations or warranties in relation to the property. 4. Unless otherwise stated, all prices and rents are quoted exclusive of VAT. February 2022. The Code of Practice on Commercial Leases in England and Wales recommends you seek professional advice before agreeing a business tenancy. The Code is available through the website: [www.commercialleasecodeew.co.uk](http://www.commercialleasecodeew.co.uk)